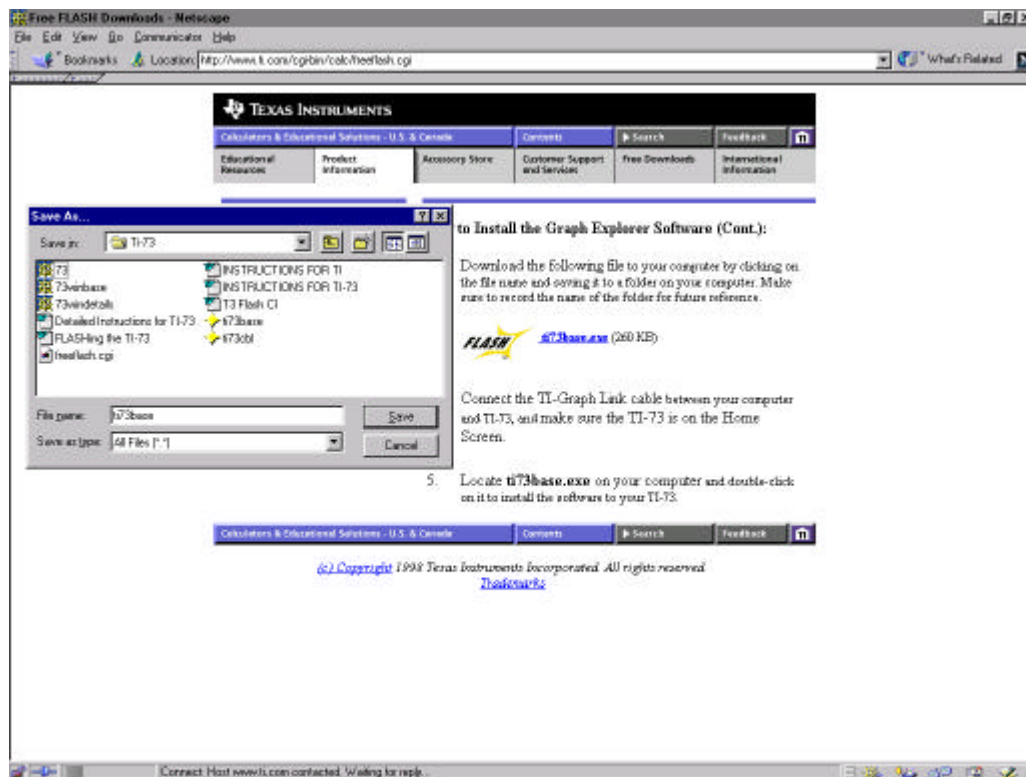


FLASHing the TI-73





INSTRUCTIONS FOR TI-73 UPGRADE

1. Caution to all T³er's back up anything that you want saved on your 73 before beginning this process. TI-73 Graph Link, Windows version, can be found on the TI web site. <http://www.ti.com/calc/docs/link73.htm>
2. Check the current version of software in TI-73: Press **y** [MEM] **Å** to select the 1:About option from the MEMORY Menu. This will allow you to see what current version of software that you have.
3. Open your web browser.
4. Type in the following web address: <http://www.ti.com/calc>
5. Click on the tab at the top of the page that is labeled "Free Downloads".
6. Click on the Flash software section labeled "TI-73".
7. Please read entire page carefully
8. Move to the Download From section, Click on "Windows™ 3.x/95/98".
9. Please read entire page carefully and Click on the "I Accept" button.
10. A security information box may appear, Read, and Click on the "Continue" button
11. Click on the "ti73base.exe"
12. Save the file in the location that is preferable; ie: desktop, C: drive, Floppy disk.
13. Once file is saved, go to the location where the file was saved, and double click on "ti73base.exe"
14. A Flash Installer window will appear, read the directions in the window, and click on the "OK" button (this will tell you to hook up the Graph Link cable)
15. The next window that appears is Flash Installer-73, with three buttons "Install", "Options", and "Exit"; Click on the "Install" button.
16. The next window will say "Successful connection established to a TI-73....., Press "OK" button to begin. The installation may take up to 20 minutes.
17. The installation will be complete on the computer before the calculator is finished. This is ok. Allow the computer and calculator time to finish installing. If the calculator shuts off do not worry, just turn the calculator back on and the process should be complete. A few warnings/notes: Please do not interrupt the installation process, remove the Graph Link cable, and try to have minimal applications open. This will help the installation process run smoothly.
18. Check your new version of software, as per direction number 2.

Detailed Instructions for TI-73 FLASH Installer for Windows

Terminology

Flash Software - A general term referring to any software which can be installed in a flash-capable TI calculator. There are two types of flash software: maintenance upgrade, and flash application. The term "flash software" in these instructions applies to either or both of these two types.

Maintenance Upgrade - Flash software that includes minor revisions to calculator functionality. Installing a maintenance upgrade resets all calculator memory to the original factory settings. This means that all user-defined variables, programs, and lists will be deleted.

Flash Application - Flash software that includes additional features. A maximum of four flash applications can reside in the TI-73 at the same time. Installing a flash application does not reset calculator memory.

Hardware and Software Requirements

Make sure you have the following items:

- TI-Graph Link™ computer-to-calculator cable. If you do not have a TI-Graph Link cable, call your [distributor](#), or order the cable on-line at the [TI Accessory Store](#).
- Connecting TI-Graph Link cable adapter, 9-pin to 25-pin, if needed.
- Computer with Windows 3.1x or Windows 95/98/NT installed.
- Graph Explorer software and/or flash application software previously downloaded from the Internet onto your computer. **Important:** You do not need the TI-Graph Link software before installing flash software to your calculator, you only need the TI-Graph Link computer-to-calculator cable.
- A TI-73 calculator.

Things to Check Before You Begin

Make sure the batteries in your TI-73 are in good working condition. To do this, turn on your TI-73. If there is a low-battery message on the screen, turn the TI-73 off and follow the battery replacement procedure in Appendix C of your TI-73 Guidebook.

You only need to perform this step if you are installing a maintenance upgrade and want to save your calculator memory contents (programs, lists, etc.). If you are installing a flash application, you may proceed to step 3. Back up your user memory and record the location of the backup file for future reference.

The steps to back up your memory are:

1. Launch the TI-73 TI-Graph Link software.
2. Open the Link menu and click on Receive.
3. Select Add All and save as a group file. If necessary, click on Help to view/print a detailed procedure about receiving files from your TI-73.
4. Exit TI-Graph Link when completed.

Before you load a flash application into your TI-73, verify that sufficient free space exists in your application memory space by entering **y** [MEM] **Å** to select 3:Check APPs from the MEMORY Menu. The first line indicates the number of free spaces available. Most applications will take up only one space. See the **Memory is Full** instructions for details about deleting applications.

If you are running on Windows 3.11 AND have an older version of the Windows Serial Driver, you may have a problem when installing maintenance upgrades to a TI-73. The problem occurs if a previous attempt at installing a maintenance upgrade failed. We recommend two solutions: Locate the SERIAL.386 file in the WINDOWS\SYSTEM directory on your computer. Make sure this file is dated 2/17/94 or later. If you have a file dated prior to 2/17/94, download WG1001.EXE and install it. This file is available from the Microsoft FTP site:

<ftp://ftp.microsoft.com/softlib/mslfiles/wg1001.exe>

-or-

This problem does not occur on either a Windows 3.1 or Windows 95/98 system. You can install the maintenance upgrade to your TI-73 from another computer that has any of those systems.

For additional help see: <http://rhf.bradley.edu/~rkremer/tifaq.htm>

Downloading Flash Software from the Web Site

Close all desktop applications except your Internet connection. (Another running application could interfere with the download.)

Download the flash software from the Internet to a folder on the hard disk of your computer and record this location for future reference.

Close your Internet connection.

Installing Flash Software to Your TI-73

1. Close all desktop applications that may have been started after you downloaded the flash software. (Another running application could interfere while the flash software is updating your TI-73.)
2. Make sure the TI-Graph Link cable is firmly connected to the calculator and the computer.
3. Start the flash software installation by double-clicking on the flash software file (ti73xxxx.exe) on your computer and following the instructions.
4. The TI-73 may briefly display a "Defragmenting" message. This simply means the calculator is preparing for downloading.
5. When the installation is complete, the Flash Installer screen will display a message that the installation was successful. If you installed a maintenance upgrade, the calculator turns off. If you installed a flash application, the calculator remains on.

Important: DO NOT interrupt the installation process. If any errors are encountered during the installation, follow the instructions. Error Recovery instructions are also described below.

Error Recovery Instructions

Communication Error

This error indicates the Flash Installer is unable to communicate with the TI-73. The problem is usually associated with the TI-Graph Link cable and its connection to the TI-73 and/or to the computer. Make sure the cable is firmly pushed in to the calculator and the computer. If this does not correct the problem, try a different TI-Graph Link cable and reboot your computer. If you continue to get this error, please contact TI-CARES Customer Support.

Maintenance Upgrade Did Not Install

The TI-73 will not be usable until you successfully complete an installation. Follow the steps below to install the maintenance upgrade.

1. If you selected CANCEL during the installation, skip to step 4.
 2. If the TI-Graph Link cable was disconnected either from the TI-73 or the computer, reconnect the cable prior to restarting the installation.
 3. Within about 20 seconds after interrupting the installer, an error will appear on your computer. The installer will exit after dismissing the error message.
 4. The TI-73 will display an error message with instructions on how to recover. This error message can take up to three minutes before it appears. Pressing any key on the TI-73 causes the TI-73 to power off.
 5. Power the TI-73 back on and restart the download by double-clicking on ti73xxxx.exe.
 6. You may be prompted for computer port and the calculator model. Most PCs are connected to Com Port 1. Select TI-73 as the calculator model.
- If you continue to have problems, contact TI-CARES.

Flash Application Did Not Install

Follow the steps below to install the flash application.

1. If you selected CANCEL during the installation, skip to step 4.
2. If the TI-Graph Link cable was disconnected either from the TI-73 or the computer, reconnect the cable prior to restarting the installation.
3. Within about 20 seconds after interrupting the installer, an error will appear on your computer. The installer will exit after the error message is dismissed and the Home screen displays.
4. Restart the download by double-clicking on the appropriate ti73xxxx.exe file.

If you continue to have problems, contact TI-CARES.

Memory is Full

This download error appears when the TI-73 contains one to four applications that occupy the available 64K of space. In order to make room for another application, you must delete one from the TI-73. Before deleting an application from the TI-73, you can back it up by using the Windows Backup Apps command in TI-Graph Link for the TI-73. Once saved, you can reload it to the TI-73 later using TI-Graph Link.

Expiration Date Reached

The application has reached its expiration date and can no longer be used. Please contact TI-CARES.

Miscellaneous Error Received

Write down the error code displayed in the dialog box and contact TI-CARES.

Checksum Error

Exit the installer and try it again. If this problem persists, contact TI-CARES.

Low Battery Condition

It's a good idea to make sure that you have sufficient battery power prior to attempting a download. Low battery indication is shown on the initial screen. If you receive this error during an installation, change the batteries before trying again.

Miscellaneous

If you obtain new or upgraded software for your TI-73, you may need to provide your current software version and/or the serial number of your unit. It is also good to know your version number in case you have difficulties with your TI-73 and need to contact technical support. Knowing the software version may make it easier to diagnose the problem.

Knowing the available number of application spaces in advance helps you better manage your application downloads.

Verify Maintenance Upgrade Version

On the TI-73, enter **y** [MEM] **A** to select 1:About from the MEMORY Menu. The version number has the format x.yyyy.

Verify Flash Application Version

On the TI-73, select APPS. Select the appropriate application and press **F**. The version number of the application appears on the initial screen.

Verify Serial Number

On the TI-73, enter **y** [MEM] **A** to select 1:About from the MEMORY Menu. The serial number appears on the line beneath the product ID number.

Check Amount of Flash Application Free Space

On the TI-73, select **y** [MEM] **Å** to select 3:Check APPs from the MEMORY Menu. The number to the right of "Spaces Free:" indicates the number of spaces available for applications. Each application requires one space. There is a maximum of four free spaces.

TI-CARES Customer Support

If after trying all of the above suggestions you are still unable to install Flash software, contact Customer Support.

* Send us e-mail at ti-cares@ti.com.

* Call us at 800-TI-CARES (800-842-2737).

(c) Copyright 1998 Texas Instruments Incorporated. All rights reserved.

Trademarks