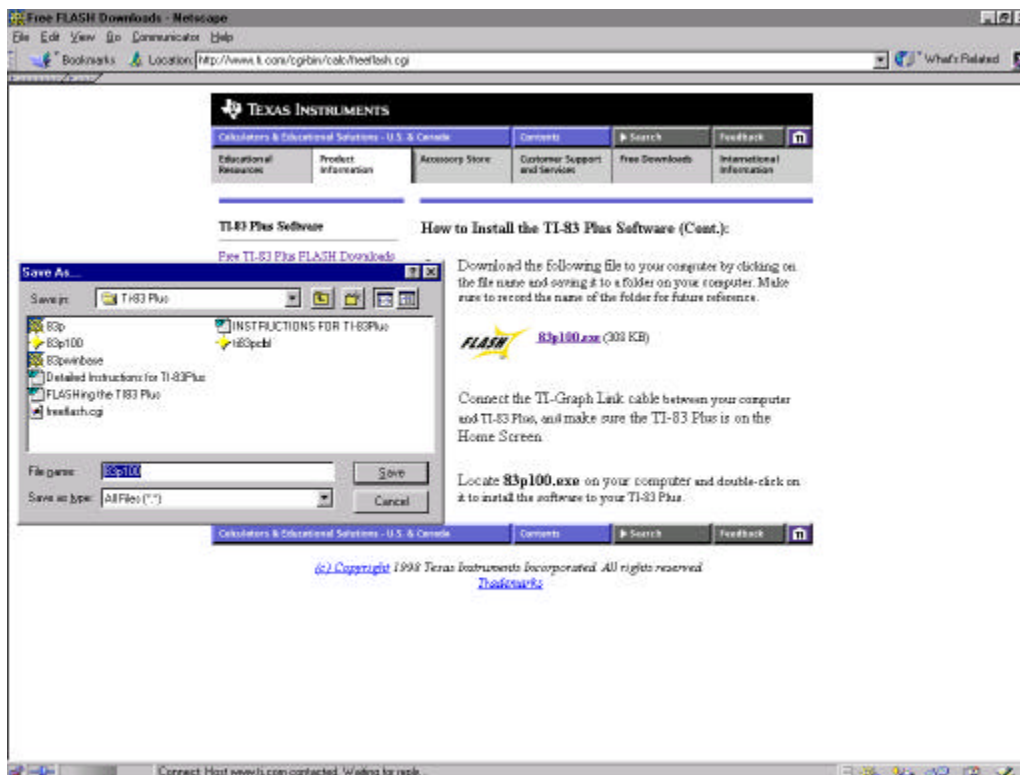


# FLASHing the TI-83 Plus

The screenshot shows a Netscape browser window displaying the Texas Instruments website. The page is titled "Free TI-83 Plus FLASH Downloads". It features a navigation menu with options like "Calculators & Educational Solutions - U.S. & Canada", "Contents", "Search", and "Feedback". The main content area is titled "Free TI-83 Plus FLASH Downloads" and includes a "FLASH" logo. Below the logo, there are links for "TI-83 Plus Software", "TI-CBL/CBR", "Real-World Math", and "Spanish". The page lists three software applications for download: "TI-83 Plus Software" (Initial Release - v1.0; December 22, 1998), "TI-CBL/CBR Application" (Initial Release - v1.0; December 22, 1998), and "Real-World Math Application" (BETA; January 11, 1999). Each application has a "Download From:" link pointing to "Windows™ 3.x/95/98". A "Spanish Localization Application" is also listed at the bottom.

The screenshot shows a Netscape browser window displaying the Texas Instruments website. The page is titled "TI-83 Plus Software" and includes a navigation menu. The main content area is titled "How to Install the TI-83 Plus Software:" and contains the following text: "BACK-UP YOUR CALCULATOR BEFORE YOU INSTALL THIS UPGRADE". It lists three steps for installation: 1. You will need a TI-Graph Link™ cable connected between your computer and TI-83 Plus to download this software. 2. Read the License Agreement below and select "I Agree" to continue. Below the steps, it states "Texas Instruments Graphing Calculators with FLASH Memory Software License Agreement" and "By downloading the software and/or documentation you agree to abide by the following provisions:". It then lists three provisions: 1. License: Subject to your payment of any applicable license fee, Texas Instruments Incorporated ("TI") grants you a license to copy and use the software programs and documentation from the linked web page ("Licensed Materials"). In addition to the copy resident on your calculator, you may keep a copy on your computer for backup/archive purposes. 2. Restrictions: You may not reverse-engineer or reverse compile the software programs portion of the Licensed Materials that are provided in object code format. You may not sell, rent or lease copies of the Licensed Materials. 3. Support: Support for the Licensed Materials is described in the documentation that accompanies the software. About such documentation, support shall be provided by TI.



## INSTRUCTIONS FOR TI-83Plus UPGRADE

1. Caution to all T<sup>3</sup>er's back up anything that you want saved on your 83Plus before beginning this process. TI-83Plus Graph Link, Windows version, can be found on the TI web site. <http://www.ti.com/calc/docs/link83.htm>
2. Check the current version of software in TI-83Plus: Press **y** [MEM] **Å** to select 1:About from the MEMORY Menu. This will allow you to see what current version of software that you have.
3. Open your web browser.
4. Type in the following web address: <http://www.ti.com/calc>
5. Click on the tab at the top of the page that is labeled "Free Downloads".
6. Click on the Flash software section labeled "TI-83Plus".
7. Please read entire page carefully (Only the windows flash installer is available at this time).
8. Move to the Download From section, Click on "Windows 3.X/95/98".
9. Please read entire page carefully and Click on the agree button.
10. A security information box will appear, Read, and Click on the "Continue" button
11. Click on the "83pxxx.exe"
12. Save the file in the location that is preferable; ie: desktop, C: drive, Floppy disk.
13. Once file is saved, go to the location where the file was saved, and double click on "83pxxx.exe"
14. A Flash Installer window will appear, read the directions in the window, and click on the "OK" button (this will tell you to hook up the Graph Link cable)
15. The next window that appears is Flash Installer-83Plus, with three buttons "Install", "Options", and "Exit"; Click on the "Install" button.
16. The next window will say "Successful connection established to a TI-83Plus....., Press "OK" button to begin. The installation may take up to 20 minutes.
17. The installation will be complete on the computer before the calculator is finished. This is ok. Allow the computer and calculator time to finish installing. If the calculator shuts off do not worry, just turn the calculator back on and the process should be complete. A few warnings/notes: Please do not interrupt the installation process, remove the Graph Link cable, and try to have minimal applications open. This will help the installation process run smoothly.
18. Check your new version of software, as per direction number 2.

## Detailed Instructions for TI-83Plus FLASH Installer for Windows

### Terminology

**Flash Software** - A general term referring to any software which can be installed in a flash-capable TI calculator. There are two types of flash software: maintenance upgrade, and flash application. The term "flash software" in these instructions applies to either or both of these two types.

**Maintenance Upgrade** - Flash software that includes minor revisions to calculator functionality. Installing a maintenance upgrade resets all calculator memory to the original factory settings. This means that all user-defined variables, programs, and lists will be deleted.

**Flash Application** - Flash software that includes additional features. A maximum of four flash applications can reside in the TI-83Plus at the same time. Installing a flash application does not reset calculator memory.

### **Hardware and Software Requirements**

Make sure you have the following items:

- TI-Graph Link™ computer-to-calculator cable. If you do not have a TI-Graph Link cable, call your [distributor](#), or order the cable on-line at the [TI Accessory Store](#).
- Connecting TI-Graph Link cable adapter, 9-pin to 25-pin, if needed.
- Computer with Windows 3.1x or Windows 95/98/NT installed.
- Graph Explorer software and/or flash application software previously downloaded from the Internet onto your computer. **Important:** You do not need the TI-Graph Link software before installing flash software to your calculator, you only need the TI-Graph Link computer-to-calculator cable.
- A TI-83Plus calculator.

## **Things to Check Before You Begin**

Make sure the batteries in your TI-83Plus are in good working condition. To do this, turn on your TI-83Plus. If there is a low-battery message on the screen, turn the TI-83Plus off and follow the battery replacement procedure in Appendix C of your TI-83Plus Guidebook.

You only need to perform this step if you are installing a maintenance upgrade and want to save your calculator memory contents (programs, lists, etc.). If you are installing a flash application, you may proceed to step 3. Back up your user memory and record the location of the backup file for future reference.

### **The steps to back up your memory are:**

1. Launch the TI-83Plus TI-Graph Link software.
2. Open the Link menu and click on Receive.
3. Select Add All and save as a group file. If necessary, click on Help to view/print a detailed procedure about receiving files from your TI-83Plus.
4. Exit TI-Graph Link when completed.

Before you load a flash application into your TI-83Plus, verify that sufficient free space exists in your calculator. Press **y** [MEM] **Á** to select 2:Mem Mgmt/Del... from the MEMORY Menu. The first line indicates the amount of RAM FREE. Different applications will take up different amounts of space. The CBL/CBR APP takes a bit over 16000 bytes. To free up space just point to the item you wish to remove and press { .

If you are running on Windows 3.11 AND have an older version of the Windows Serial Driver, you may have a problem when installing maintenance upgrades to a TI-83Plus. The problem occurs if a previous attempt at installing a maintenance upgrade failed. We recommend two solutions:

Locate the SERIAL.386 file in the WINDOWS\SYSTEM directory on your computer. Make sure this file is dated 2/17/94 or later. If you have a file dated prior to 2/17/94, download WG1001.EXE and install it. This file is available from the Microsoft FTP site:

<ftp://ftp.microsoft.com/softlib/mslfiles/wg1001.exe> -or-

This problem does not occur on either a Windows 3.1 or Windows 95/98 system. You can install the maintenance upgrade to your TI-83Plus from another computer that has any of those systems.

For additional help see: <http://rhf.bradley.edu/~rkremer/tifaq.htm>

### **Downloading Flash Software from the Web Site**

Close all desktop applications except your Internet connection. (Another running application could interfere with the download.)

Download the flash software from the Internet to a folder on the hard disk of your computer and record this location for future reference.

Close your Internet connection.

### **Installing Flash Software to Your TI-83Plus**

1. Close all desktop applications that may have been started after you downloaded the flash software. (Another running application could interfere while the flash software is updating your TI-83Plus.)
2. Make sure the TI-Graph Link cable is firmly connected to the calculator and the computer.
3. Start the flash software installation by double-clicking on the flash software file (83pxxxx.exe) on your computer and following the instructions.
4. The TI-83Plus may briefly display a "Defragmenting" message. This simply means the calculator is preparing for downloading.
5. When the installation is complete, the Flash Installer screen will display a message that the installation was successful. If you installed a maintenance upgrade, the calculator turns off. If you installed a flash application, the calculator remains on.

**Important:** DO NOT interrupt the installation process. If any errors are encountered during the installation, follow the instructions. Error Recovery instructions are also described below.

### **Error Recovery Instructions**

#### **Communication Error**

This error indicates the Flash Installer is unable to communicate with the TI-83Plus. The problem is usually associated with the TI-Graph Link cable and its connection to the TI-83Plus and/or to the computer. Make sure the cable is firmly pushed in to the calculator and the computer. If this does not correct the problem, try a different TI-Graph Link cable and reboot your computer. If you continue to get this error, please contact TI-CARES Customer Support.

### **Maintenance Upgrade Did Not Install**

The TI-83Plus will not be usable until you successfully complete an installation. Follow the steps below to install the maintenance upgrade.

1. If you selected CANCEL during the installation, skip to step 4.
2. If the TI-Graph Link cable was disconnected either from the TI-83Plus or the computer, reconnect the cable prior to restarting the installation.
3. Within about 20 seconds after interrupting the installer, an error will appear on your computer. The installer will exit after dismissing the error message.
4. The TI-83Plus will display an error message with instructions on how to recover. This error message can take up to three minutes before it appears. Pressing any key on the TI-83Plus causes the TI-83Plus to power off.
5. Power the TI-83Plus back on and restart the download by double-clicking on 83pxxxx.exe.
6. You may be prompted for computer port and the calculator model. Most PCs are connected to Com Port 1. Select TI-83Plus as the calculator model.

If you continue to have problems, contact TI-CARES.

### **Flash Application Did Not Install**

Follow the steps below to install the flash application.

1. If you selected CANCEL during the installation, skip to step 4.
2. If the TI-Graph Link cable was disconnected either from the TI-83Plus or the computer, reconnect the cable prior to restarting the installation.
3. Within about 20 seconds after interrupting the installer, an error will appear on your computer. The installer will exit after the error message is dismissed and the Home screen displays.
4. Restart the download by double-clicking on the appropriate 83pxxxx.exe file.

If you continue to have problems, contact TI-CARES.

### **Expiration Date Reached**

The application has reached its expiration date and can no longer be used. Please contact TI-CARES.

### **Miscellaneous Error Received**

Write down the error code displayed in the dialog box and contact TI-CARES.

### **Checksum Error**

Exit the installer and try it again. If this problem persists, contact TI-CARES.

### **Low Battery Condition**

It's a good idea to make sure that you have sufficient battery power prior to attempting a download. Low battery indication is shown on the initial screen. If you receive this error during an installation, change the batteries before trying again.

### **Miscellaneous**

If you obtain new or upgraded software for your TI-83Plus, you may need to provide your current software version and/or the serial number of your unit. It is also good to know your version number in case you have difficulties with your TI-83Plus and need to contact technical support. Knowing the software version may make it easier to diagnose the problem.

Knowing the available number of application spaces in advance helps you better manage your application downloads.

### **Verify Maintenance Upgrade Version**

On the TI-83Plus, enter **y** [MEM] **Å** to select 1:About from the MEMORY Menu. The version number has the format x.yyyy.

### **Verify Flash Application Version**

On the TI-83Plus, select APPS. Select the appropriate application and press **Í**. The version number of the application appears on the initial screen.

### **Verify Serial Number**

On the TI-83Plus, press **y** [MEM] **Å** to select 1:About from the MEMORY Menu. The serial number appears on the line beneath the product ID number.

### **Check Amount of Flash Application Free Space**

On the TI-83Plus, press **y** [MEM] **Á** to select 2:Mem Mgmt/Del... from the MEMORY Menu. The first line indicates the amount of RAM FREE.



Different applications will take up different amounts of space. The CBL/CBR APP takes a bit over 16000 bytes. To free up space just point to the item you wish to remove and press { .

#### TI-CARES Customer Support

If after trying all of the above suggestions you are still unable to install Flash software, contact Customer Support.

\* Send us e-mail at [ti-cares@ti.com](mailto:ti-cares@ti.com).

\* Call us at 800-TI-CARES (800-842-2737).

(c) Copyright 1998 Texas Instruments Incorporated. All rights reserved.

Trademarks